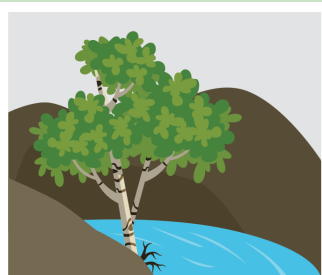


WE CAN ALL WORK TOGETHER TO Prevent runoff from entering our local waterways!

Everyone can play their part in preventing runoff from entering our local waterways. Below are a few tips to help prevent soil erosion.



Identify Potential Erosion Issues

Tip #1

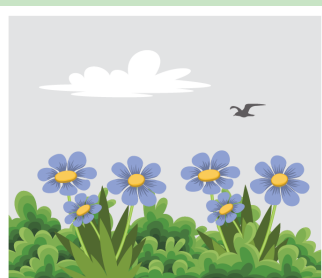
Contact local landscaping experts or conduct an inspection yourself by looking for clues like muddy water streams or pools after rain storms, recently exposed tree roots, or water and soil deposits in lower areas, among others.



Use Permeable or Porous Materials

Tip #4

Use materials that allow for water to drain naturally in the ground—like gravel or bricks set in sand—whenever possible to avoid hard surface runoff.



Plant Vegetation & Landscaping

Tip #2

Plant vegetation in areas at risk of erosion due to water and wind, or use landscaping techniques like mulching, terrace systems, or even gardens to mitigate erosion wherever possible.



Pick Up After Pets

Tip #5

Clean up after your four-legged friends to ensure their waste doesn't enter storm drains and, ultimately, the Chesapeake Bay.



Channel Water into Vegetation & Landscaping

Tip #3

Create channels for water to flow from your driveway, roof, or other hard surfaces into your vegetation or landscaping, allowing for the water to gradually be absorbed into the ground and preventing it from going into storm drains.

It's important to remember that no single person, state or company is responsible for debris or pollution, which comes from a variety of sources.

Everyone can help play a part in cleaning up our waterways.

Source: mda.maryland.gov/resource_conservation/Documents/tip3.pdf